

<b>BOARD SUMMARY SHEET</b>	
<b>Title</b>	Monthly Infection Prevention Performance Report
<b>Submitted by</b>	Sue Hardy
<b>Prepared by</b>	Fiona Barnes
<b>Date of meeting</b>	3 <sup>rd</sup> March 2010
<b>Corporate Objectives Addressed</b>	To develop and embed measures for quality and clinical outcomes to achieve the highest standards
<b>SUMMARY OF CRITICAL POINTS</b> Monthly update on reportable HCAs	
<b>PATIENT IMPACT</b> High – review of incidents and trend analysis of HCAs is paramount to improving patient safety and quality of care.	
<b>STAFF IMPACT</b> High – review of incidents and trend analysis of HCAs is paramount to improving patient safety and quality of care and also impacts on staff safety and wellbeing.	
<b>FINANCIAL IMPACT</b> Will be identified as required	
<b>EQUALITY AND DIVERSITY IMPACT</b> Applicable to all	
<b>LEGAL IMPLICATIONS</b> The Board has a statutory obligation to ensure appropriate infection prevention and control mechanisms are in place.	
<b>RISK ASSESSMENT</b> Failure to review infection prevention and control would be considered to be high risk.	
<b>RECOMMENDATION</b> The Board is asked to consider the content of this report.	

**Introduction**

The Board is aware of its duty to ensure appropriate infection prevention and control mechanisms are in place to promote patient safety and quality of care. This report provides the assurance required by the Board to satisfy its statutory requirements by providing an update as to the current situation in relation to Healthcare Acquired Infections (HCAIs) within the Trust.

**Care Quality Commission (CQC) Inspection Visit**

Following receipt of the HCAI Report, the CQC made further contact to gain assurance that actions had been implemented where there was a failure in our systems and processes in relation of decontamination of commodes and mattresses.

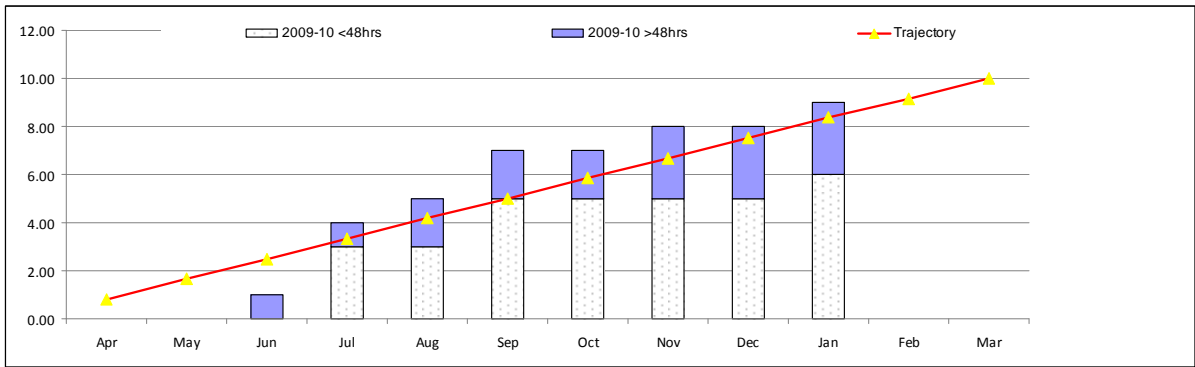
The Trust was able to satisfactorily demonstrate that our action plan had addressed the outstanding concern and the 'Follow up Report' from the CQC confirms that they found 'no evidence that the Trust has breached the regulation to protect patients, workers and others from the risks of acquiring a healthcare-associated infection'.

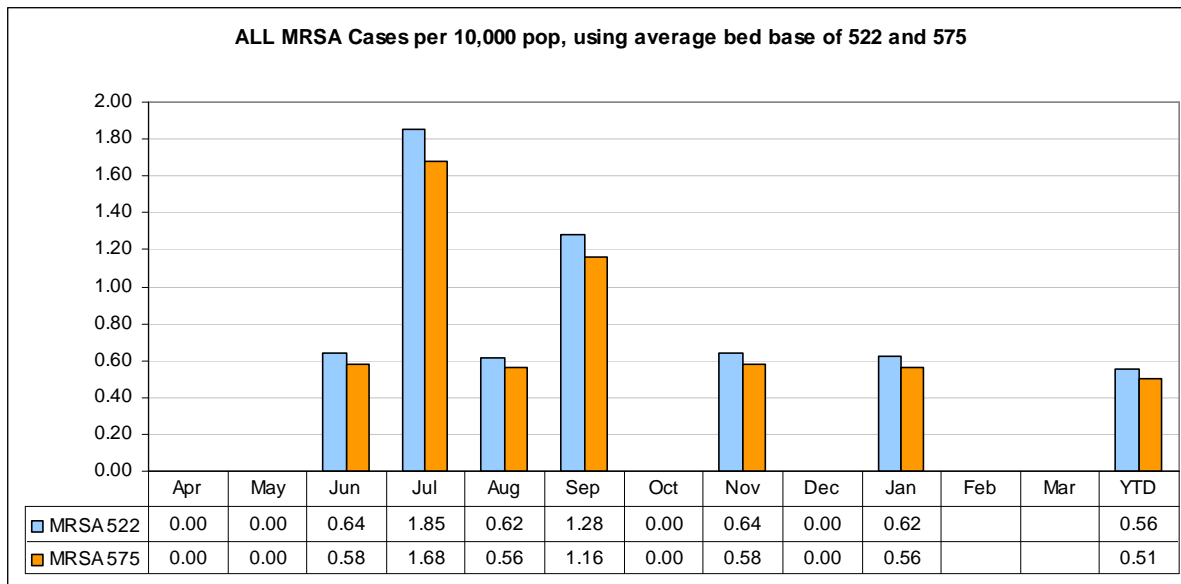
To support the on-going HCAI agenda the 'Infection Prevention Inspection' led by the Executive Team commenced in February.

**MRSA Bacteraemia (Appendix 2)**

The Trust has been in discussions with the SHA after being made aware they were reviewing MRSA and C Diff rates by measured bed days. As a result, both bed day rates as reported by the Health Protection Agency (HPA), and numbers of cases will be reported to the Board in future reports.

In January there was 1 < 48hrs MRSA bacteraemia therefore our current position is a total of 6 > 48hrs and 3 <48hrs therefore we remain above our trajectory. We remain very engaged with the community provider services and the PCT in reviewing ways to reduce the number of <48hr bacteraemias.





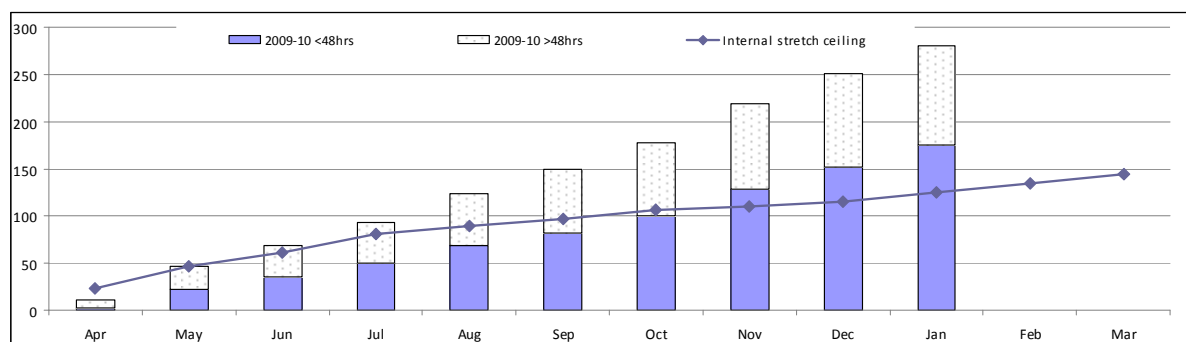
The above graph identifies the number cases by 10,000 bed days. Acute Trusts are currently measured on all cases (both pre and post 48hr). The graph also shows the bed day rate by 522 beds (as measured by the HPA) and 575 beds, which our actual bed base. If this was measured on Trust attributable cases only, on our correct bed base, the rate would be 0.19.

The Department of Health (DH) has now released the ceiling numbers for MRSA Bacteraemias for 2010/11. The cases have now been split between acute and PCT organisations, with the ceiling number for NGH being 6 >48hr cases and a bed day rate per 100,000 beds of 2.87 (using our current bed base of 575).

### MRSA Colonisation (Appendix 3)

During January there were 23<48hrs and 7>48hrs cases of MRSA colonisation.

The Board had raised concerns about the numbers of >48hr cases being found on Allebone Ward over a period of time. This has been discussed in detail with both the Modern Matron and Ward Sister, where it was identified that Allebone Ward is screening all patients on a weekly basis, which is not the current screening policy. However, as they are finding new cases it was agreed for them to continue this practice but this will be reviewed on a monthly basis.



### MRSA Screening

Internal patient verified data identifies 97.4% compliance for the screening of elective admissions during January. The Trust continues to meet the target for the matched census approach reported externally.

The compliance rate for emergency screening in January was 90.7%.

### Clostridium Difficile (C Diff) (Appendix 4)

As previously identified for MRSA Bacteraemias, the measurement basis for C Diff will be reported in numbers and bed day rates, currently by 1,000 bed days (HPA data).

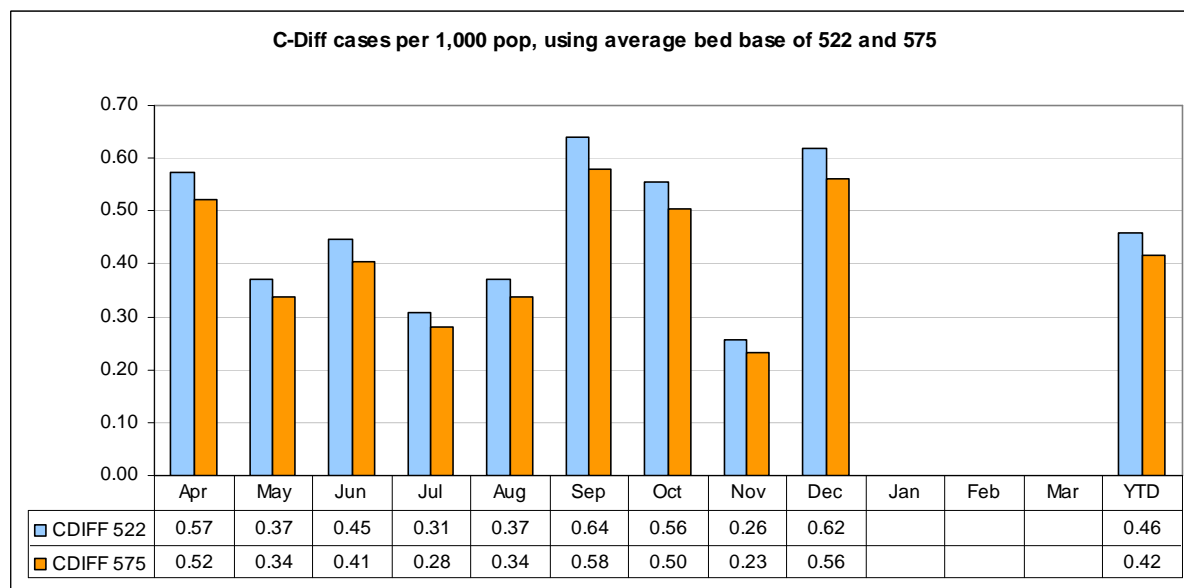
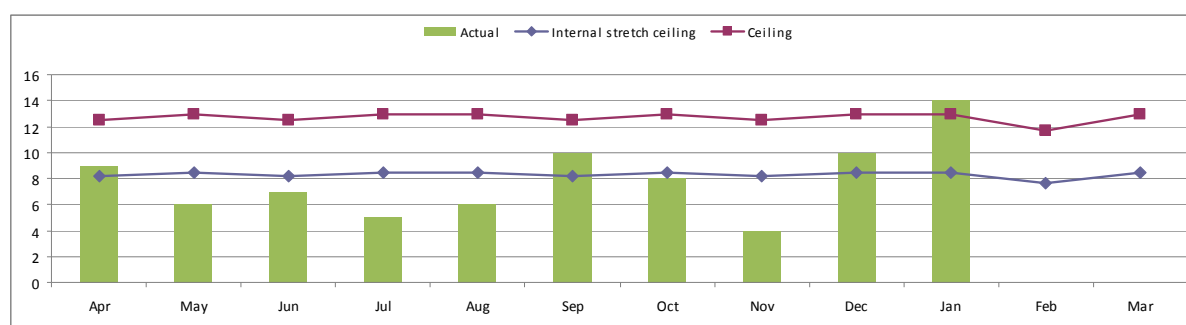
During January the Trust identified 3 < 3 day and 14 > 3 day cases of C Difficile. Due to the ongoing Norovirus outbreak, more specimens have been tested, which can result in finding higher numbers of incidental C Difficile cases. The Consultant Microbiologist confirmed this may be the situation during January.

Clostridium Difficile - Post 48 Hrs

Monthly	Apr	May	Jun	Jul	Aug	Sep	Oct	Nov	Dec	Jan	Feb	Mar	2009-10
Internal stretch ceiling	8	8	8	8	8	8	8	8	8	8	8	8	100
Ceiling	12	13	12	13	13	12	13	12	13	13	12	13	152
Actual	9	6	7	5	6	10	8	4	10	14	0	0	79

Cumulative	Apr	May	Jun	Jul	Aug	Sep	Oct	Nov	Dec	Jan	Feb	Mar
Internal stretch ceiling	8	17	25	33	42	50	59	67	75	84	92	100
Ceiling	12	25	38	51	64	76	89	102	115	127	139	152
Actual	9	15	22	27	33	43	51	55	65	79		



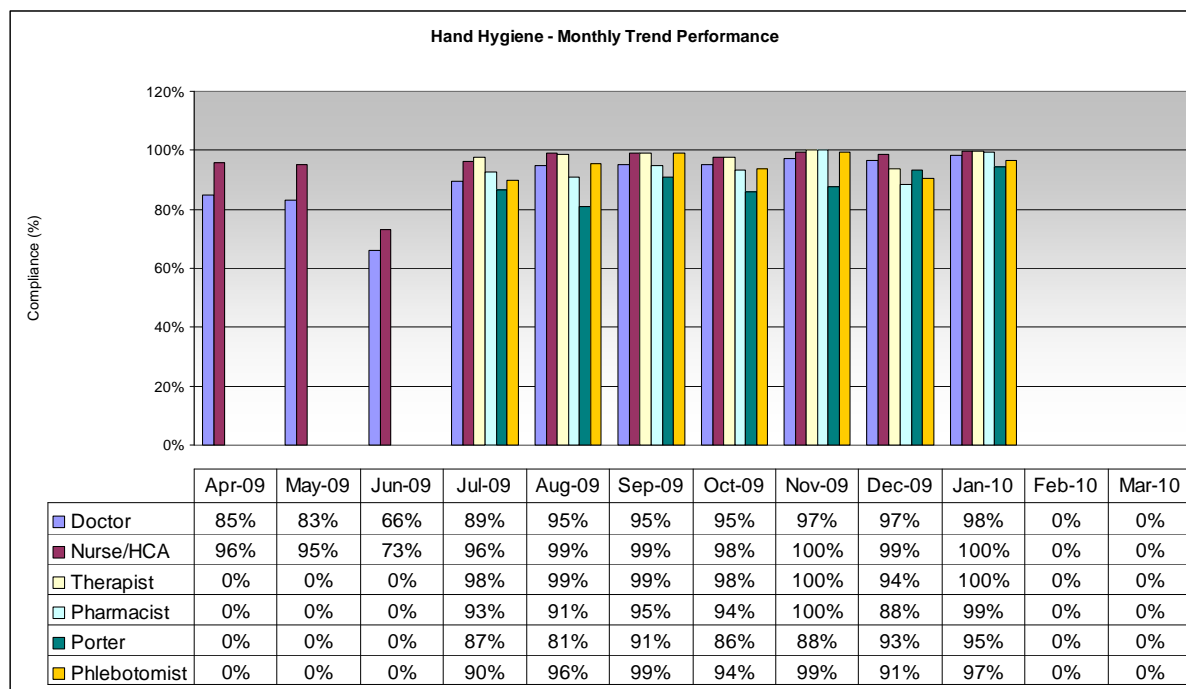
Although the Trust is managing to stay below the internal stretch ceiling for C Diff, it should be noted that our bed day rate has been identified as the highest in the region. This rate would suggest that no matter how well we believe we are doing in our numbers of cases, we have a higher bed day rate than other hospitals in the region.

Following analysis and discussion with the Consultant Microbiologist and Infection Prevention Committee, we believe this is due to the number of specimens we take and there being no proactive diagnosis of 'infective diarrhoea'. Actions are being taken to address this

issue with clear guidance on when to take specimens and ensuring an assessment is undertaken which suggests whether the patient has 'infective diarrhoea'.

### Hand Hygiene Audit

Information from the Hand Hygiene Observational Tool (HHOT) shows that overall compliance within the Trust was 91.7% in January. This is an improvement on last months results.



The next visitor audit is due to take place during February and will be reported to the Board in March.

### Norovirus Outbreak

The Norovirus Outbreak has continued within the Trust since December. A number of wards have been affected during the outbreak but daily Outbreak meetings have ensured that the operational management of the Trust has been risk assessed and balanced with the management and containment of the Outbreak. The Outbreak will be formally reported as an SI to the Board in accordance to Trust guidance.

### Recommendation

The Board is asked to discuss the content of this report.

Sue Hardy  
 Director of Nursing, Midwifery & Patient Services  
 DIPC

Appendix 2

MRSA Bacteraemia Incidence by Ward

MRSA Bact	Apr		May		Jun		Jul		Aug		Sep		Oct		Nov		Dec		Jan		Feb		Mar		Trust Total 2009-10	
Ward	<48	>48	<48	>48	<48	>48	<48	>48	<48	>48	<48	>48	<48	>48	<48	>48	<48	>48	<48	>48	<48	>48	<48	>48		
Hawthorn																									0	
Willow																										0
Collingtree 23hr																										0
ITU																										0
HDU																										0
A & E							1				1															2
Abington																										0
Cedar																										0
Becket																										0
SingleHurst																										0
Knightley																										0
Gossett																										0
Disney																										0
Paddington																										0
Balmoral																										0
Robert Watson																										0
Sandringham																										0
Spencer																										0
Sturtridge																										0
Allebone																										0
Benham																										0
Creaton																1										1
Dryden																										0
EAU					1	2					1									1						5
Eleanor																										0
Victoria																										0
Rowan																										0
Finedan																										0
Compton										1																1
Brampton																										0
Holcot																										0
Althorp																										0
Talbot Butler																										0
Trust Total 2009-10	0	0	0	0	0	1	3	0	0	1	2	0	0	0	0	1	0	0	1	0	0	0	0	0	0	9

Appendix 3  
MRSA Colonisation Incidence by Ward

MRSA ISOLATES	Apr		May		Jun		Jul		Aug		Sep		Oct		Nov		Dec		Jan		Feb		Mar		Trust Total 2009-10
	<48	>48	<48	>48	<48	>48	<48	>48	<48	>48	<48	>48	<48	>48	<48	>48	<48	>48	<48	>48	<48	>48	<48	>48	
Hawthorn	1	0	0	0	0	0	0	0	0	0	0	0	0	0	1	0	1	0		1					4
Willow	0	0	0	1	0	0	0	0	0	1	0	1	0	0	1	1	0	1		1					7
Collingtree	0	0	0	1	0	1	0	0	0	1	0	0	1	0	0	1	0	0	1						6
ITU	1	0	0	1	0	0	0	0	1	0	0	0	0	0	1	0	0	0							4
HDU	0	0	0	0	0	0	0	0	0	0	0	0	0	0	0	0	0	0		1					1
A & E	0	0	2	0	0	0	0	0	0	0	0	0	1	0	1	0	2	0	2						8
Abington	0	3	0	0	0	0	0	0	0	0	0	0	0	0	0	0	0	0							3
Cedar	0	0	0	0	0	0	0	0	1	0	1	0	1	3	1	1	1	0	2						11
Becket	0	0	0	0	1	0	0	0	0	0	0	0	0	0	0	1	1	0							3
SingleHurst	0	0	0	0	0	0	0	0	0	0	0	0	0	0	0	0	0	0							0
Knightley	0	0	0	0	1	1	1	0	0	0	0	0	0	0	3	0	0	0							6
Gossett	0	0	0	0	0	0	0	0	0	0	0	0	0	0	0	0	0	0							0
Disney	0	0	0	0	1	0	0	0	0	0	0	0	0	0	1	0	0	0							2
Paddington	0	0	0	0	0	0	0	0	1	0	0	0	0	0	1	0	1	0							3
Balmoral	0	0	0	0	0	0	0	0	0	0	0	0	0	0	0	0	0	0		1					1
Robert Watson	0	0	0	0	0	0	0	0	0	0	0	0	0	0	0	0	0	0		1					1
Sandringham	0	0	0	0	0	0	0	0	0	0	0	0	0	0	0	0	0	0							0
Spencer	0	0	1	1	0	0	2	1	0	0	0	1	0	1	0	0	1	0	1	1					10
Sturtridge	0	0	0	0	0	0	0	0	0	0	0	0	0	0	0	0	0	0							0
Allebone	0	2	0	0	0	2	0	1	0	2	1	3	0	0	0	4	1	4		1					21
Benham	0	0	0	2	1	1	0	0	1	1	0	0	0	1	0	0	0	0	1	2					10
Creaton	0	0	0	0	0	2	0	2	0	1	0	2	0	1	0	1	0	1							10
Dryden	0	0	0	1	0	1	0	1	0	1	0	0	0	0	1	0	1	1							7
EAU	0	0	13	0	7	0	11	0	14	0	10	3	15	0	16	0	12	0	12						113
Eleanor	0	0	0	0	0	0	0	0	0	1	0	1	0	0	0	0	1	0							3
Victoria	0	0	0	1	0	0	0	1	0	0	0	0	0	0	0	0	0	0							2
Rowan	0	0	0	0	0	0	0	0	0	0	0	0	0	1	1	0	2	0							4
Finedon	0	0	1	0	1	0	1	0	0	0	0	0	0	0	0	0	0	0		1					4
Compton	0	0	3	0	0	0	0	1	0	0	2	0	0	2	0	1	0	0							9
Brampton	0	2	0	5	1	0	0	1	0	1	0	0	0	1	0	1	0	0							12
Holcot	0	1	0	1	0	0	0	1	0	1	0	1	0	0	0	1	0	0							6
Althorp	0	1	0	1	0	1	0	1	0	3	0	0	0	0	0	1	0	1							9
Talbot Butler	0	0	0	0	0	0	0	0	0	0	0	0	0	0	0	0	0	0		1					1
Trust Total 2009-10	2	9	20	15	13	9	15	10	18	13	14	12	18	10	28	13	24	8	23	7	0	0	0	0	281

Appendix 4

Clostridium Difficile Incidence by Ward

CDT Ward	Apr		May		Jun		Jul		Aug		Sep		Oct		Nov		Dec		Jan		Feb		Mar		Trust Total 2009-10
	<48	>48	<48	>48	<48	>48	<48	>48	<48	>48	<48	>48	<48	>48	<48	>48	<48	>48	<48	>48	<48	>48	<48	>48	
Hawthorn	0	1	0	0	0	0	0	0	0	0	0	0	0	0	0	0	0	0							1
Willow	0	0	0	0	0	0	0	2	0	0	0	0	0	0	0	1	0	0							3
Collingtree	0	0	0	1	0	0	0	0	0	0	1	0	0	1	0		0								3
ITU	0	2	0	0	0	0	0	1	0	0	0	0	2	0	0	0	0								5
HDU	0	0	1	0	0	1	0	1	0	0	0	0	0	0	0	0	1								4
A & E	0	0	0	0	0	0	0	0	0	0	0	0	0	0	0	0	0								0
Abington	0	0	0	0	0	0	0	0	0	0	0	0	0	0	0	0	0								0
Cedar	0	0	0	0	0	0	0	0	0	0	0	0	0	0	0	0	0								0
Becket	0	0	1	0	0	0	0	0	0	0	0	0	0	0	0	0	0			1					2
Singlehurst	0	0	0	0	0	0	0	0	0	0	0	0	0	0	0	0	1								1
Knightley	0	1	0	0	0	0	0	1	0	0	0	0	0	0	0	0	0			1					3
Gossett	0	0	0	0	0	0	0	0	0	0	0	0	0	0	0	0	0								0
Disney	0	0	1	0	0		0	0	0	0	0	1	0	0	0	0	0	1							3
Paddington	0	0	0	0	0	0	0	0	1	0	0	0	0	0	0	0	0								1
Balmoral	0	0	0	0	0	0	0	0	0	0	0	0	0	0	0	0	0								0
Robert Watson	0	0	0	0	0	0	0	0	0	0	0	0	0	0	0	0	0								0
Sandringham	0	0	0	0	0	0	0	0	0	0	0	0	0	0	0	0	0								0
Spencer	1	0	0	0	0	0	0	0	0	0	1	0	0	0	0	0	0								2
Sturtridge	0	0	0	0	0	0	0	0	0	0	0	0	0	0	0	0	0								0
Allebone	0	1	0	2	1	1	0	0	0	4	0	1	0	0	0	0	2			2					14
Benham	1	1	0	0	0	1	2	0	0	0	0	0	1	0	2	0	1								9
Creaton	0	0	0	0	0	1	1	0	0	0	0	5	0	1	0	1	0	2			1				12
Dryden	0	0	0	0	0	1	0	0	0	0	0	0	0	0	0	0	0	1	1						3
EAU	1	0	0	0	0	1	3	0	0	0	0	0	2	0	0	0	1	0	1						9
Eleanor	0	0	0	0	0	0	0	0	0	1	0	0	0	0	0	0	0			1					2
Victoria	0	1	0	1	0	1	0	0	0	0	0	0	0	0	0	0	0								3
Rowan	0	1	0	0	0	0	0	0	0	0	0	0	1	0	0	0	0								2
Finedon	0	0	0	1	0	0	0	0	0	1	0	0	0	0	0	0	0			2					4
Compton	0	0	0	0	0	0	0	0	0	0	0	0	0	0	0	1	1			2					4
Brampton	0	0	0	0	0	0	0	0	0	0	1	0	1	0	0	0	0								2
Holcot	0	0	0	0	0	0	0	0	0	0	0	0	0	0	0	0	0								0
Althorp	0	0	0	1	0	0	0	0	0	0	0	1	0	1	0	0	1			1					5
Talbot Butler	0	1	0	0	0	0	0	0	0	0	0	0	1	0	0	1	1			2					6
Trust Total 2009-10	3	9	3	6	1	7	6	5	1	6	0	10	3	8	1	4	3	10	3	14	0	0	0	0	103